

EPV16A

TRUCK MOUNTED BOOM LIFT



- Working height of 15.8m
- Low cost truck mounted articulated boom lift
- Designed to be fitted to most 4.5 tonne and greater GVM vehicles
- Simple and easy to use and maintain
- Versatile, all-steel boom construction


www.snorkellifts.com

TRUCK MOUNTED BOOM LIFT

EPV16A

DIMENSIONS

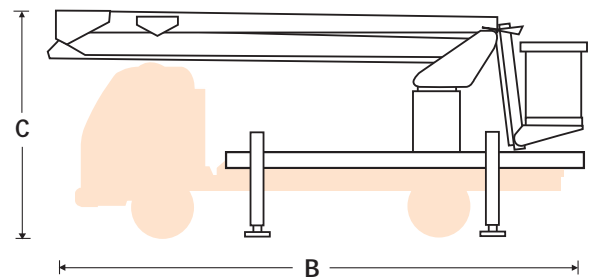
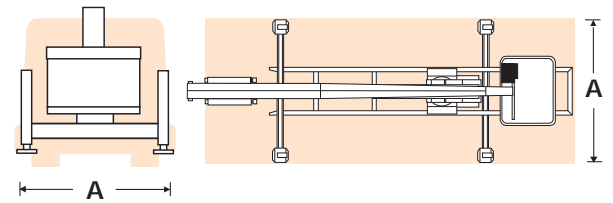
	EPV16A
Max. working height	15.8m
Max. platform height	13.8m
Horizontal outreach	7.1m
Platform length	0.61m
Platform width	1.07m
Overall width (A)	1.95m
Overall length (B)	6.75m
Stowed height (C)	2.8m

PERFORMANCE

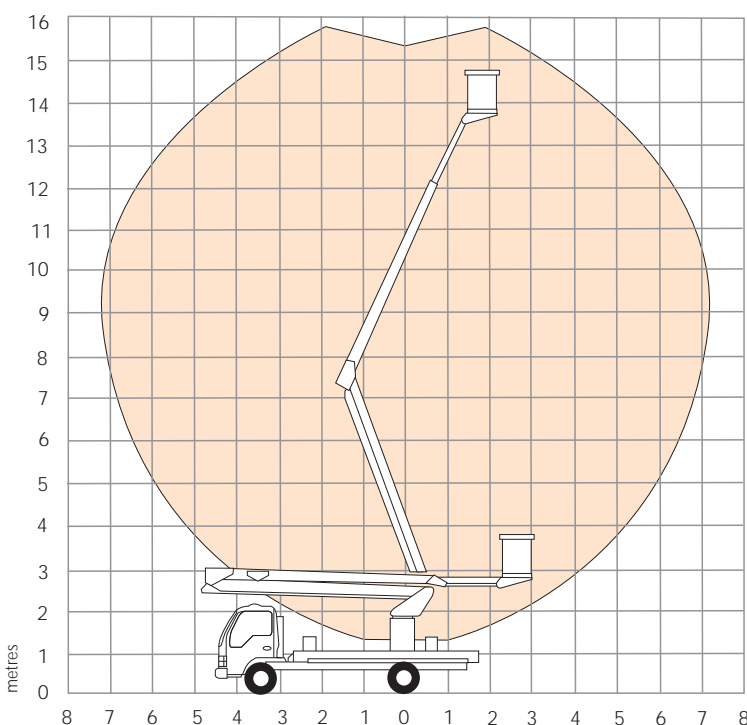
Platform capacity (SWL)	200kg
Levelling	Mechanical
Turntable rotation	540° non-continuous

POWER

Power source	Petrol or truck mounted PTO
Hydraulic system	Live hydraulic system



WORKING ENVELOPE



STANDARD FEATURES

- All steel boom and base construction
- Outrigger/boom safety interlock switches
- Emergency manual bleed down
- Number coded wiring
- Automatic stabilizers
- Hour meter
- Fail safe hydraulics with check valves
- 5 year structural warranty

OPTIONS

- AC outlet in platform
- AC motorpower source
- Flashing light on boom
- LV insulation
- Safety harness and lanyard
- Hydraulic outlet in platform
- Airline to platform
- Full deck and access way
- 360° continuous rotation

Examples of suitable trucks:

4.5 tonne GVM or greater required
 Isuzu NPR300M Wheel base 3.365m (standard units)
 Hino 300 series 616 Wheel base 3.4m (standard units)
 NPR 250m 3.36 wheel base 4.5 tonne
 NPR 300m 3.36 wheel base 6.5 tonne

snorkel www.snorkellifts.com

2/26 Redfern Street,
 Wetherill Park,
 NSW 2164, Australia
 t: +61 1300 900 700
 e: sales.au@snorkellifts.com