

# EPV16A

## TRAILER MOUNTED BOOM LIFTS



- Working height of 15.8m
- Low cost truck mounted articulated boom lift
- Designed to be fitted to most 5500kg and greater GVM Vehicles
- Simple and easy to use and maintain
- Versatile, all-steel boom construction

 **snorkel**<sup>™</sup>  
[www.snorkellifts.com](http://www.snorkellifts.com)

# TRAILER MOUNTED BOOM LIFTS

# EVP16A

## DIMENSIONS MHP15HD

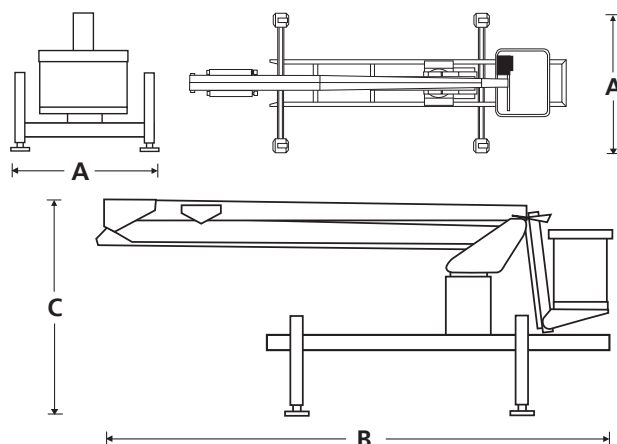
Max. working height	15.8m
Max. platform height	13.8m
Horizontal outreach	7.1m
Platform length	0.61m
Platform width	0.07m
Overall width (A)	1.94m
Overall length (B)	6.75m
Stowed height (C)	2.8m

## PERFORMANCE

Platform capacity	200kg
Levelling	auto
Turntable rotation	540° non-continuous

## POWER

Power source	Petrol or truck mounted PTO
Hydraulic system	Live hydraulic system



## STANDARD FEATURES

- All steel boom and base construction
- Stabiliser/boom interlock
- Emergency manual bleed down
- Number code wiring
- Automatic self-levelling stabilizers
- Hour meter
- Full steel deck with perimeter handrails
- Fail safe hydraulics with check valves
- Rotating basket mount

## OPTIONS

- AC outlet in platform
- AC motorpower source
- Flashing light on boom
- LV insulation
- Safety harness and lanyard
- Hydraulic outlet in platform
- Airline to platform
- Full deck and access way
- 10.9m height cutout switch

## Examples of suitable trucks

4.5 tonne GVM or greater required

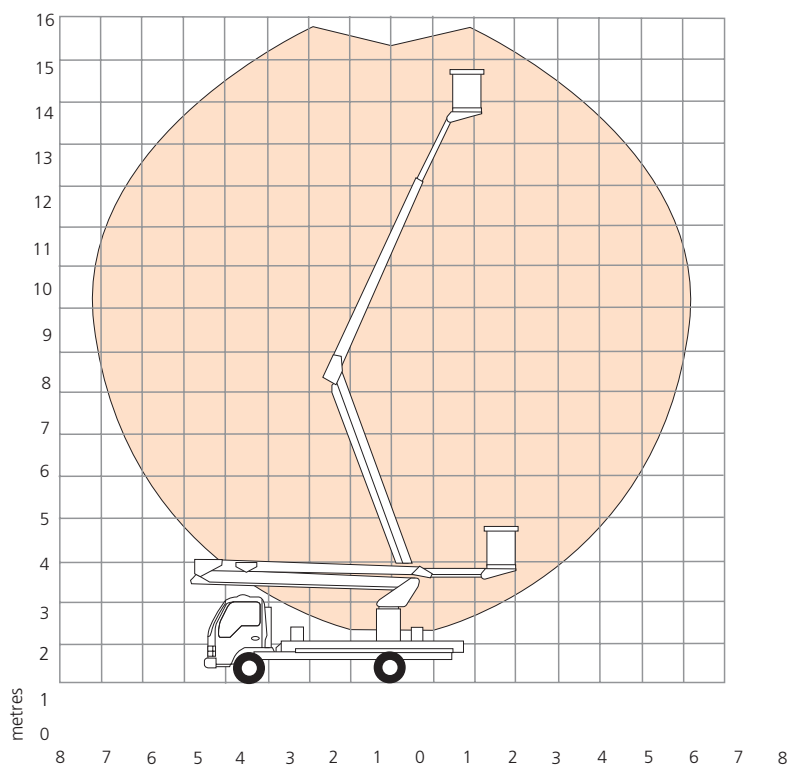
Isuzu NPR300M Wheel base 3.365m (standard units)

Hino 300 series 616 Wheel base 3.4m (standard units)

NPR 250m 3.36 wheel base 4.5 tonne

NPR 300m 3.36 wheel base 6.5 tonne

## WORKING ENVELOPE



**snorkel** [www.snorkellifts.com](http://www.snorkellifts.com)

Vigo Centre, Birtley Road,  
Washington, Tyne & Wear,  
NE38 9DA, U.K.

t: +44 (0) 845 1550 057

e: [sales@snorkellifts.com](mailto:sales@snorkellifts.com)